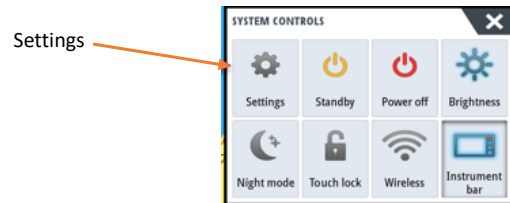




## Verify Transducer Settings

Access the Echo menu to verify the correct transducer is selected. Use the Installation option to change or select the correct transducer from the menu when a 9Pin Xsonic Transducer is not present.

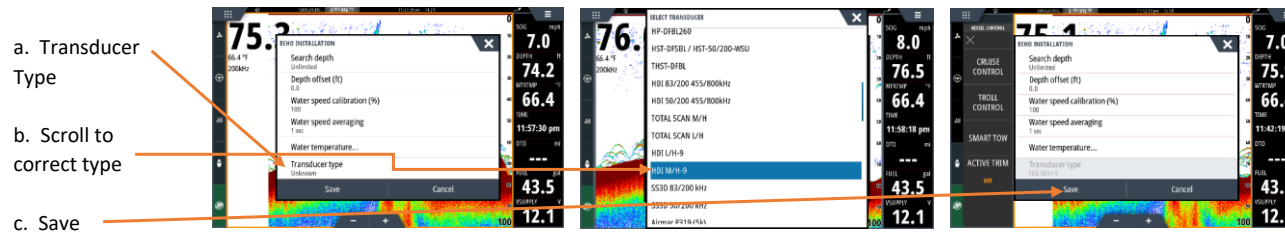
1. With the unit powered on, press the Power Button or "Swipe" down from the top of the screen to access System Control Menu, and select "Settings"



2. In the "Settings Menu", use your finger to select the "Echo" option. In the "Installation" menu, select "Transducer Type."



3. In the corresponding pop-up menu, use your finger to choose the connected transducer. You can identify the model by looking at the silver tag located on the transducer cable where it plugs into the sonar port on the rear of the display. Note: 9 Pin Xsonic Transducers will Auto ID when connected which will not allow the selection of another transducer.



4. Once you have made your selection, be sure to "SAVE" your settings to ensure that the selection was applied to the system configuration.